



BOND
COLLECTIVE

PROJECT DETAILS

BRAND: BOND COLLECTIVE

Location: Brooklyn, New York

Year: 2019

Size: 35,000 sqft / 3,252 sqm



PROJECT DESCRIPTION

CHRISTIAN LAHOUE STUDIO and Bond Collective collaborated to develop a custom Co-working space. The unique staircase, which is the driving design element throughout, connects the various programs of the building, augmenting the user experience with multiple feature elements. Using a soft green and pink palette, and by juxtaposing the old brick structure with modern design and materials, we developed a unique work experience where you feel at home at work. Layering beautiful, sleek materials with old, rough textures allow to intersect the old with the new and create a gritty glam.







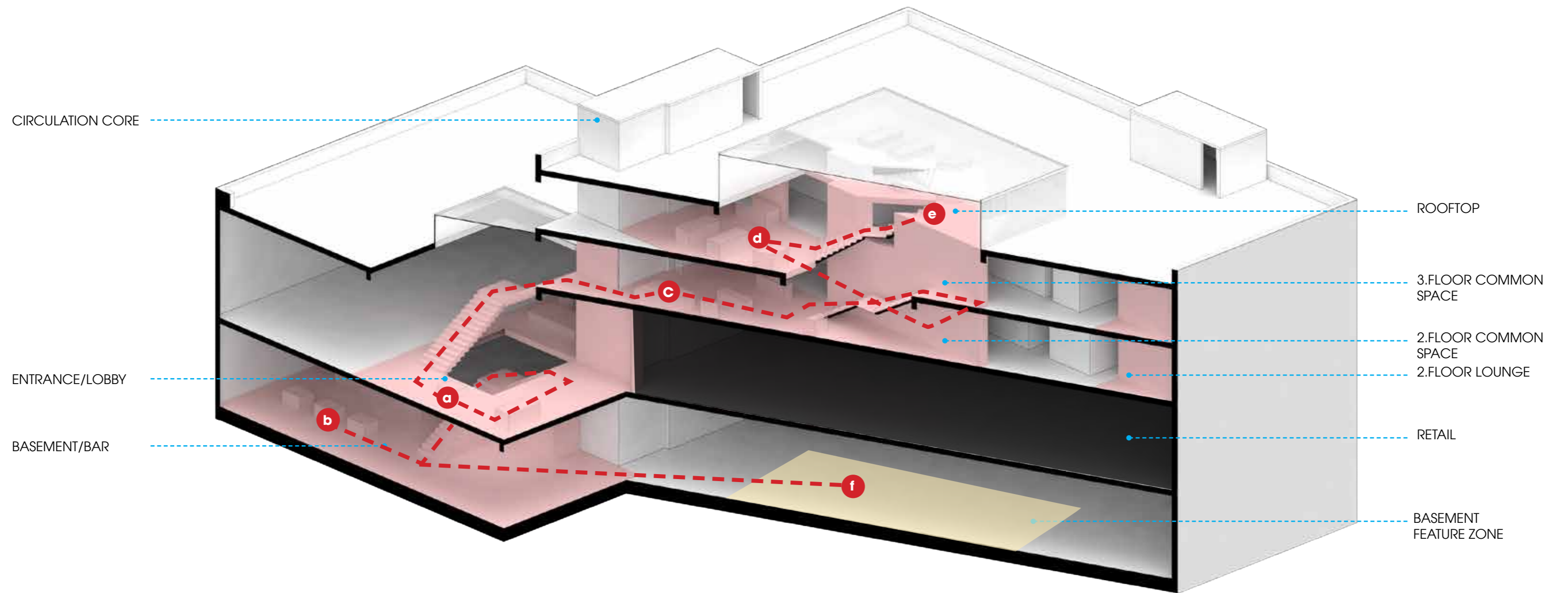






CIRCULATION

VERTICAL CONNECTIONS | INTERLOCKING



SPACIAL ELEMENTS
STAIRCASE DESIGN AND MATERIALITY

